



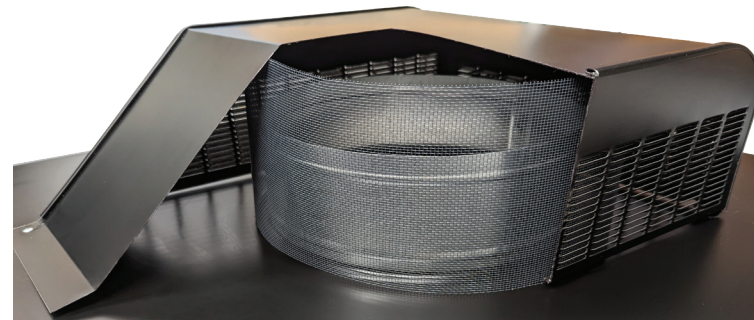
TRI-BUILT® 750-GES ROOF VENT

TRI-BUILT 750-GES Roof Vent is a slant-back style, self-flashing roof mounted attic exhaust vent. Features a bird-proof construction, louvered sides are seamed to the top and the top is riveted securely to the base flashing; three louvered sides open upward to prevent shingle discoloration; weather-tight collar, seamed to the base flashing; and large nailing flange. Additional screen for increased weather protection. This is an exhaust vent and must be used in conjunction with adequate intake vents for proper operation.

The TRI-BUILT® 750-GES Roof Vent is built with three outward and upward discharging side vents to prevent unsightly roof streaking that is so common with ordinary roof louvers. This exclusive Lomanco design also prevents the problem of bird and animal infiltration while providing maximum attic exhaust air flow and weather protection.

750-GES FEATURES:

- Galvanized steel construction
- Enhanced weather protection
- Extra large 6" nailing flange
- 1/16" nominal mesh screen
- Fits 2/12 to 16/12 roof pitch
- Weather proof and bird proof
- Design prevents roof discoloration
- Stack effect and three louvered sides provide enhanced airflow

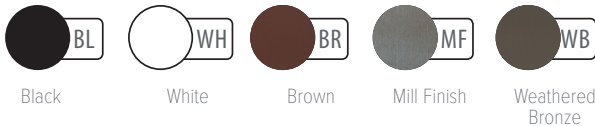


CUTAWAY VIEW



PREVENTS UNSIGHTLY ROOF DISCOLORATION

Available Colors:



| Model | Overall Size (in.) | Opening Size (in.) | NFA (in. ²) |
|---------|--------------------|--------------------|-------------------------|
| 750-GES | 23 x 27¼ x 5 | 8 | 50 |

| ATTIC FLOOR SPACE IN SQ. FT. | 1000 | | | | | | | 1500 | | | | | | | 2000 | | | | | | | 2500 | | | | | | | 3000 | | | | | | | 3500 | | | | | | | | | | | | |
|---------------------------------|---------|------|------|------|---------|-----|-------|-----------|---------|------|------|------|---------|-----|--------|-----------|---------|------|------|------|---------|--------|-------|-----------|---------|------|------|------|---------|-----|-------|-----------|---------|------|------|--------|---------|-----|-------|-----------|----|----|----|----|----|----|----|----|
| | Intake | | | | | | | Intake | | | | | | | Intake | | | | | | | Intake | | | | | | | Intake | | | | | | | Intake | | | | | | | | | | | | |
| EXHAUST SYSTEM | Exhaust | C416 | C616 | C816 | 105/190 | 140 | SV-10 | DA-4/IV-9 | Exhaust | C416 | C616 | C816 | 105/190 | 140 | SV-10 | DA-4/IV-9 | Exhaust | C416 | C616 | C816 | 105/190 | 140 | SV-10 | DA-4/IV-9 | Exhaust | C416 | C616 | C816 | 105/190 | 140 | SV-10 | DA-4/IV-9 | Exhaust | C416 | C616 | C816 | 105/190 | 140 | SV-10 | DA-4/IV-9 | | | | | | | | |
| 750-GES | 5 | 10 | 7 | 4 | 4 | 3 | 4 | 7 | 8 | 16 | 11 | 7 | 6 | 5 | 7 | 12 | 10 | 20 | 14 | 8 | 7 | 6 | 8 | 14 | 12 | 24 | 17 | 10 | 9 | 7 | 10 | 17 | 15 | 30 | 21 | 12 | 11 | 9 | 12 | 21 | 17 | 34 | 23 | 14 | 12 | 10 | 14 | 24 |

How many vents do you need? Select the Attic Floor Space to be ventilated and an Exhaust System — find where the two intersect to determine the amount of 750-GES vents needed. Select an Intake System and repeat the steps to determine the amount of intake vents needed.